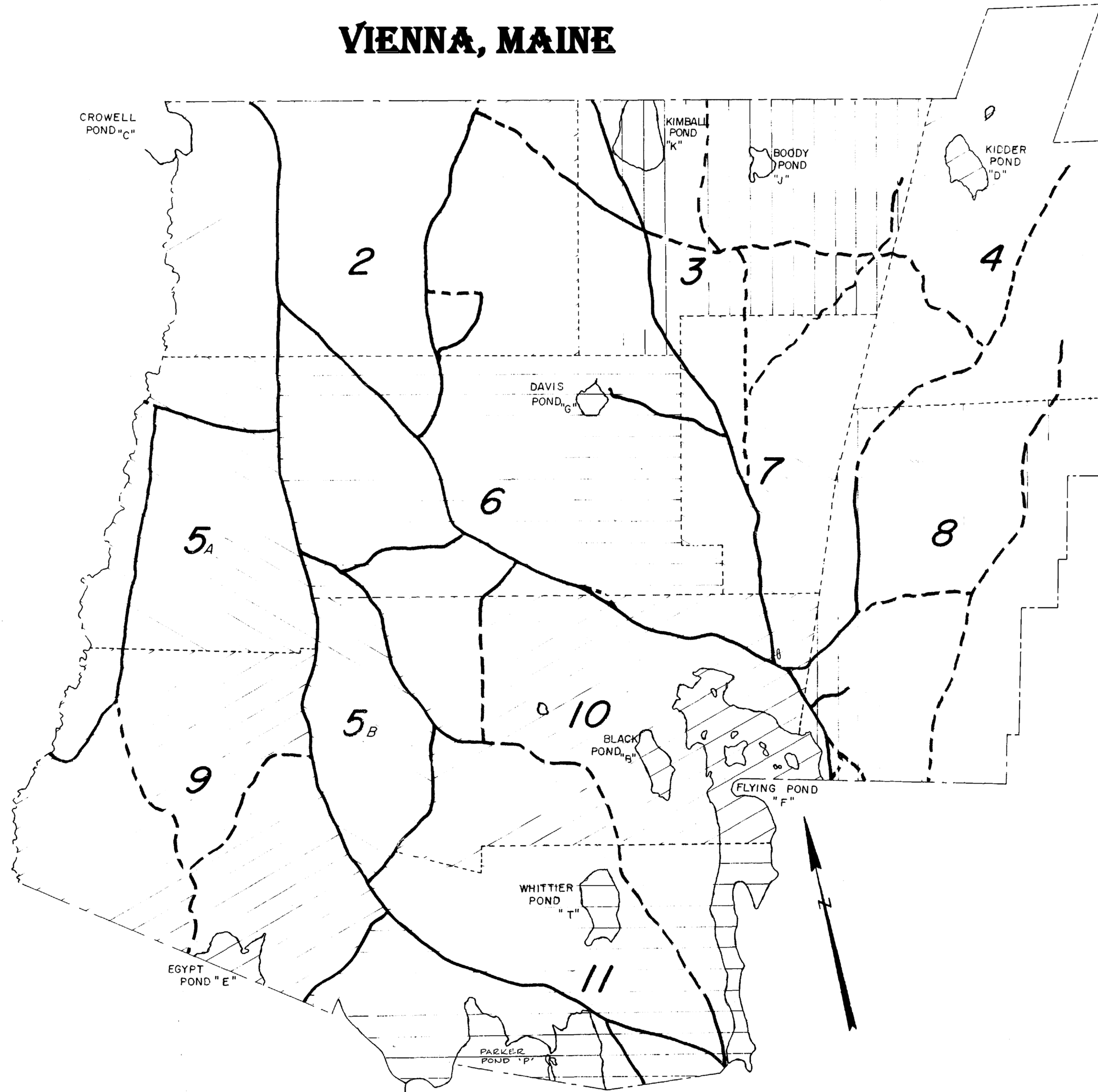


VIENNA, MAINE



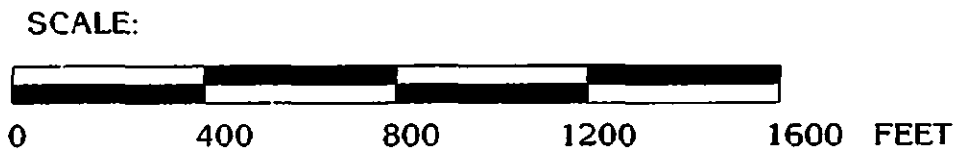
NOTE: These maps are intended for assessment purposes ONLY and are not suitable for ANY other use.

Original scale: 1" = 1540' +/-

Updated to April 1, 2012 by
YORK HILL SURVEYING
Creston Gaither, PLS
150 Davis Road
Vienna, ME 04360
(207) 293-2909
FAX (toll-free): 1-888-296-5947
e-mail: crestong@yahoo.com

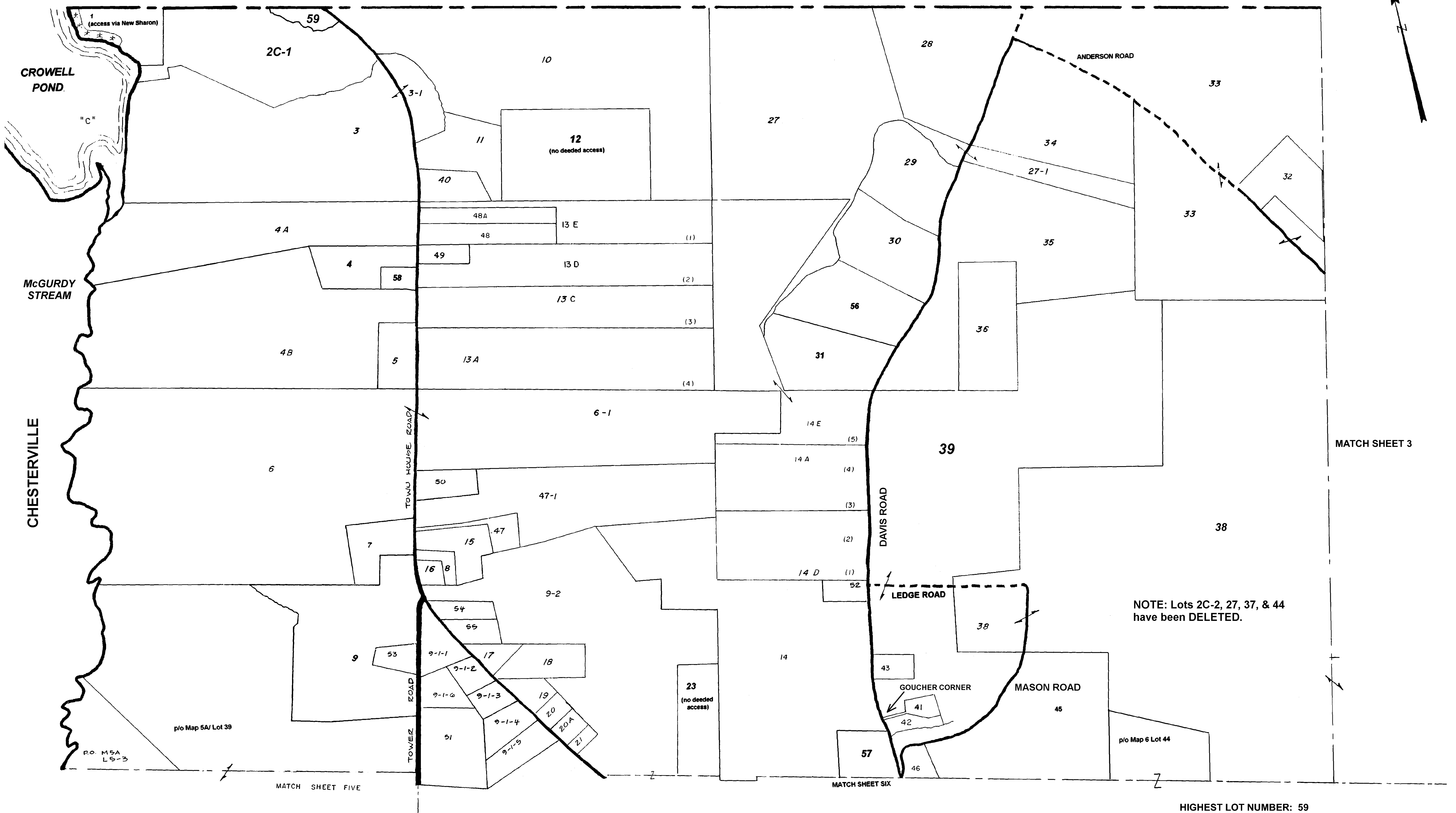
Original maps by J. Pongonis
Updates 1994 - present by York Hill Surveying, Vienna, ME

TOWN OF VIENNA TAX MAP NO. 1 (index) APRIL 1, 2012



NOTE: These maps are intended for assessment purposes ONLY and are not suitable for ANY other use.

NEW SHARON



Original maps by J. Pongonis
 Updates 1994 - present by York Hill Surveying, Vienna, ME

TOWN OF VIENNA

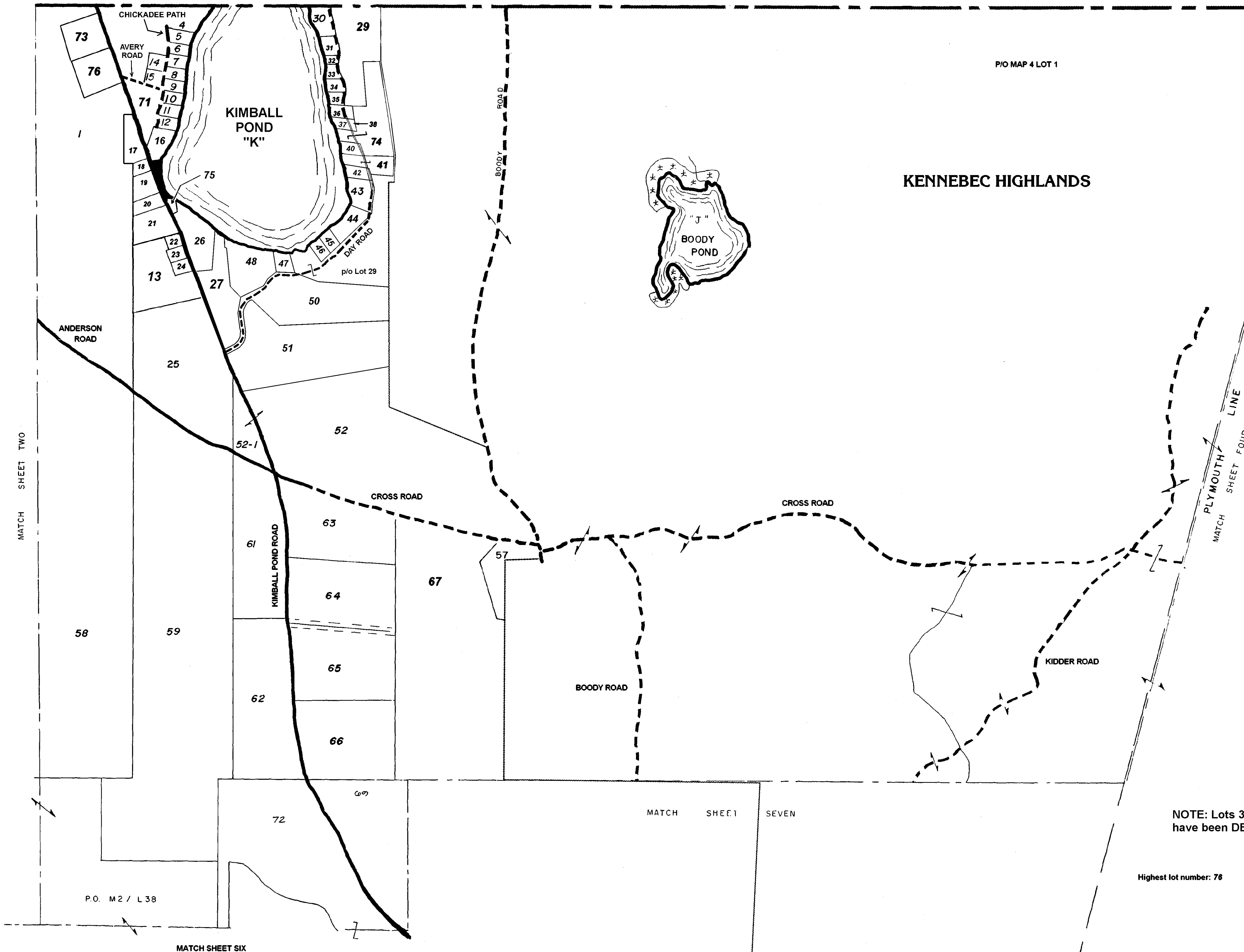
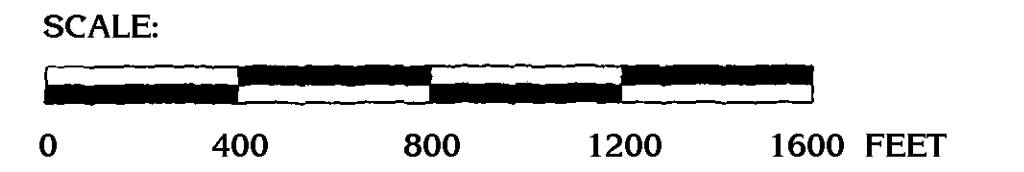
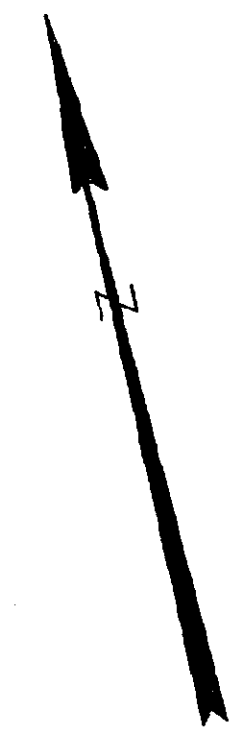
TAX MAP NO. 2

APRIL 1, 2012

NEW SHARON

PIO MAP 4 LOT 1

KENNEBEC HIGHLANDS



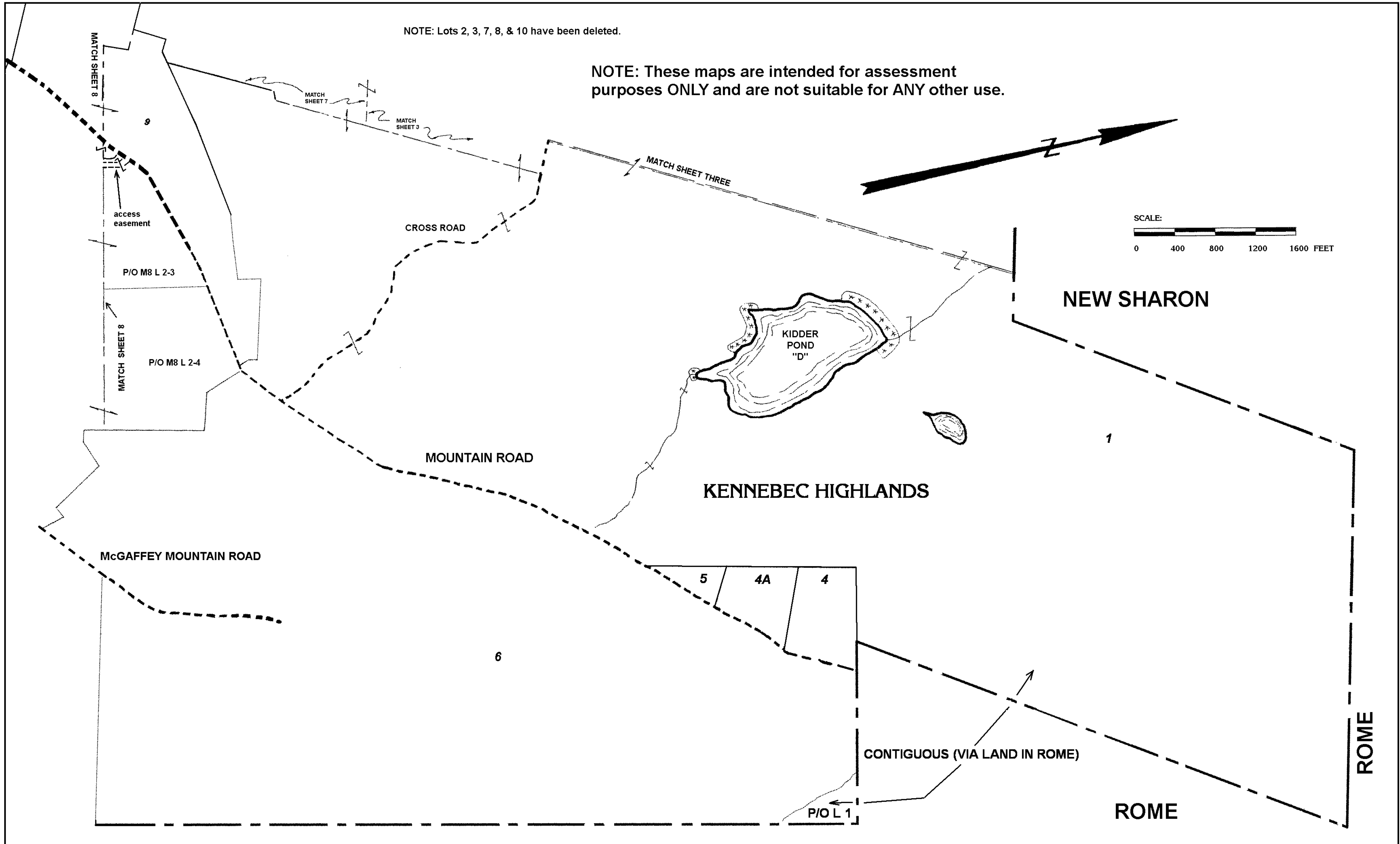
NOTE: Lots 39, 49, 54, 55, 60, & 70 have been DELETED

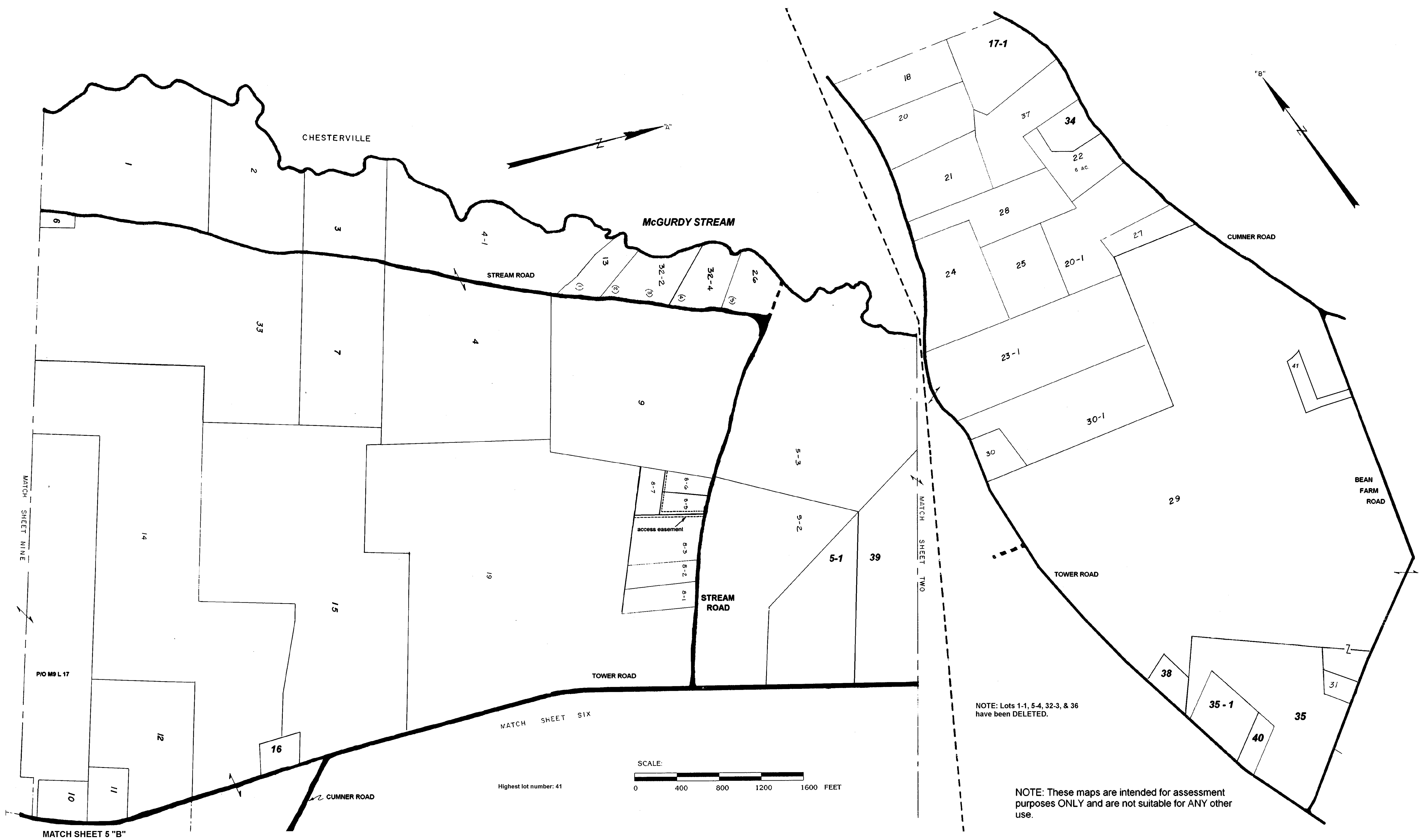
Highest lot number: 76

NOTE: These maps are intended for assessment purposes ONLY and are not suitable for ANY other use.

NOTE: Lots 2, 3, 7, 8, & 10 have been deleted.

NOTE: These maps are intended for assessment purposes ONLY and are not suitable for ANY other use.



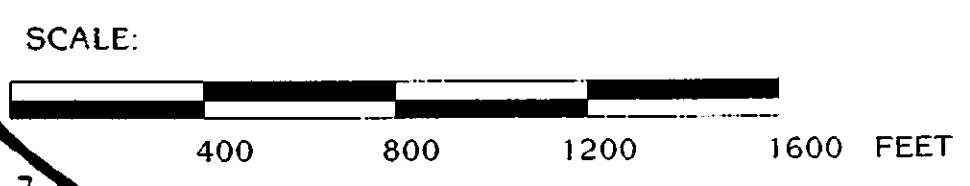
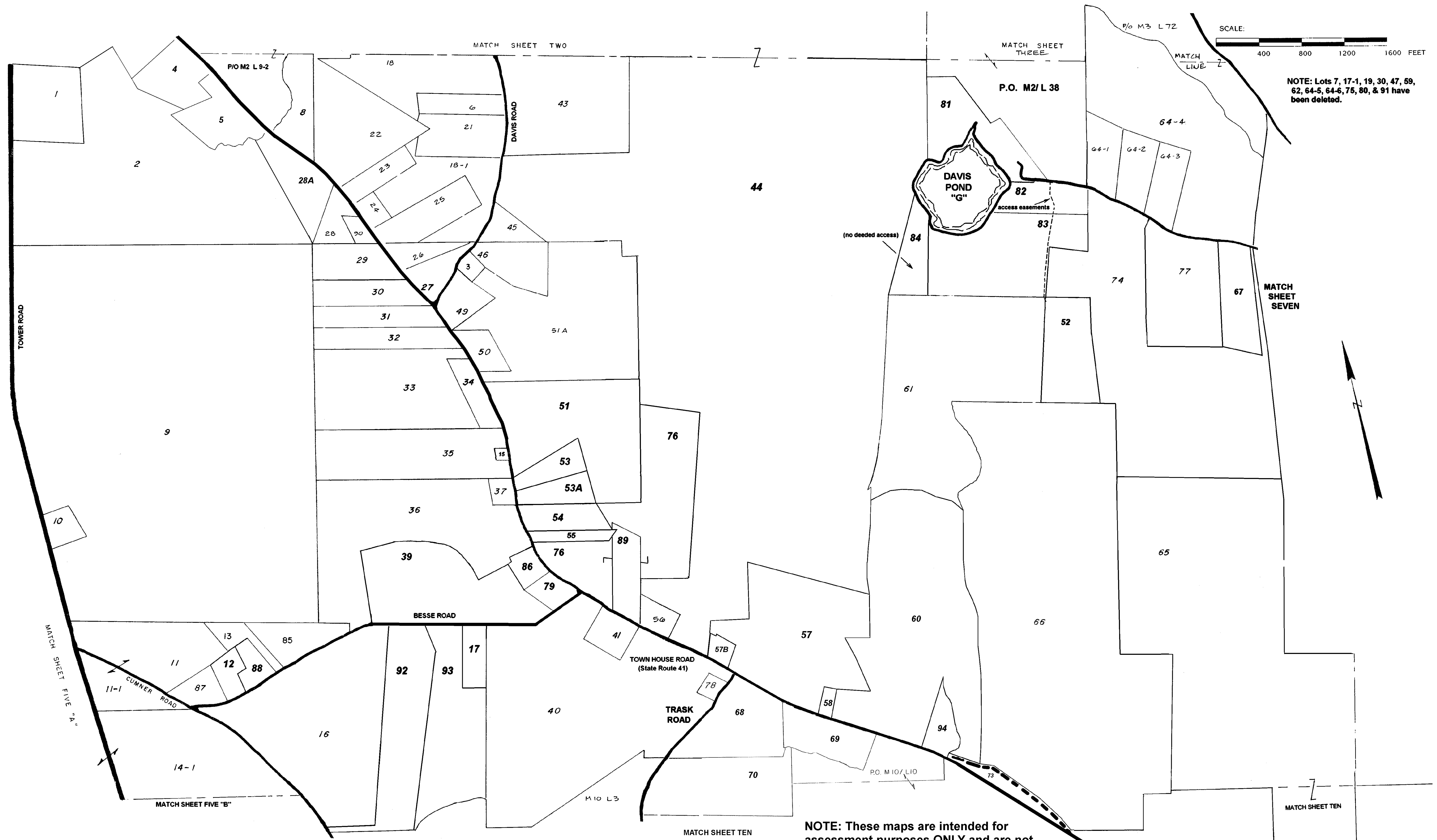


Original maps by J. Pongonis
 Updates 1994 - present by York Hill Surveying, Vienna, ME

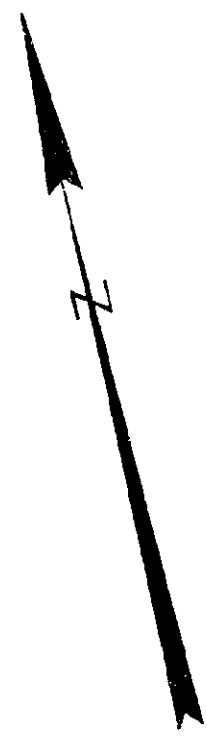
TOWN OF VIENNA

TAX MAP NO. 5

APRIL 1, 2012

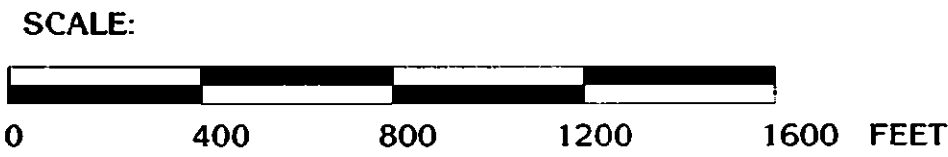
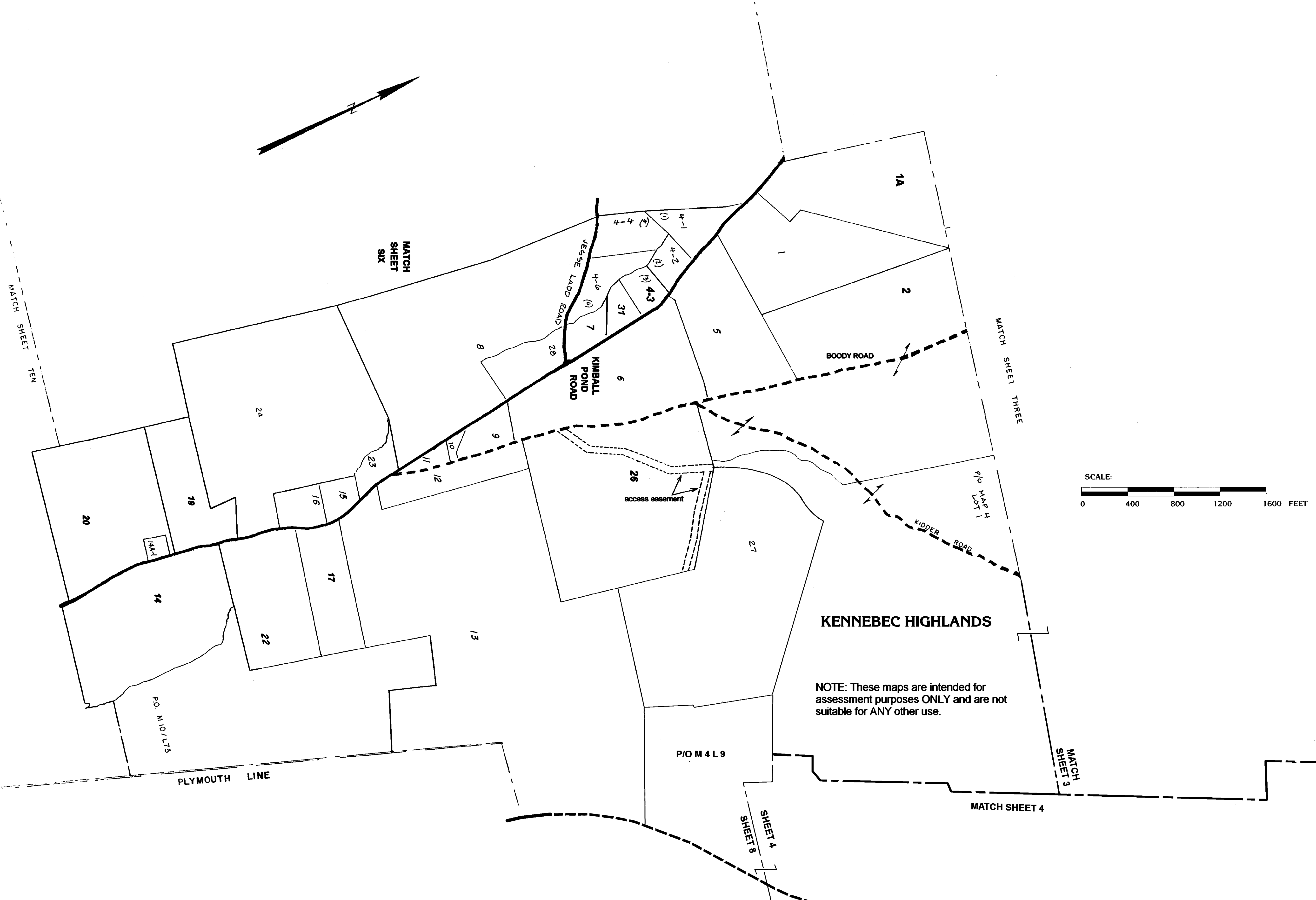
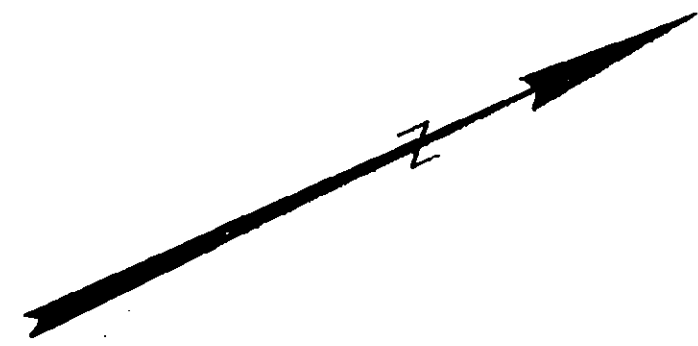


NOTE: Lots 7, 17-1, 19, 30, 47, 59, 62, 64-5, 64-6, 75, 80, & 91 have been deleted.



HIGHEST LOT NUMBER: 94

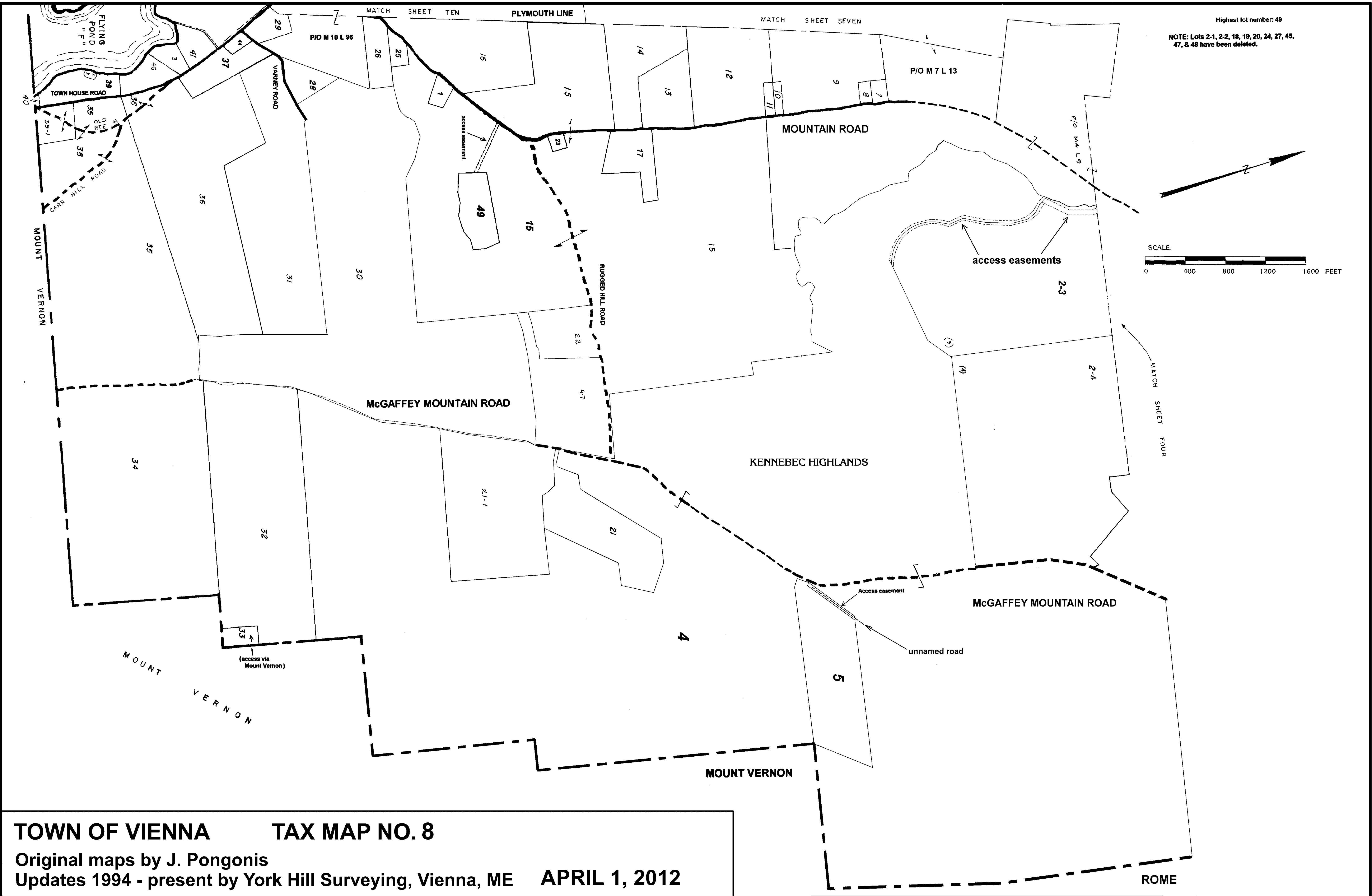
NOTE: These maps are intended for assessment purposes ONLY and are not suitable for ANY other use.



NOTE: Lots 4-5, 18, 25, 29, & 30 have been deleted.
HIGHEST LOT NUMBER: 31

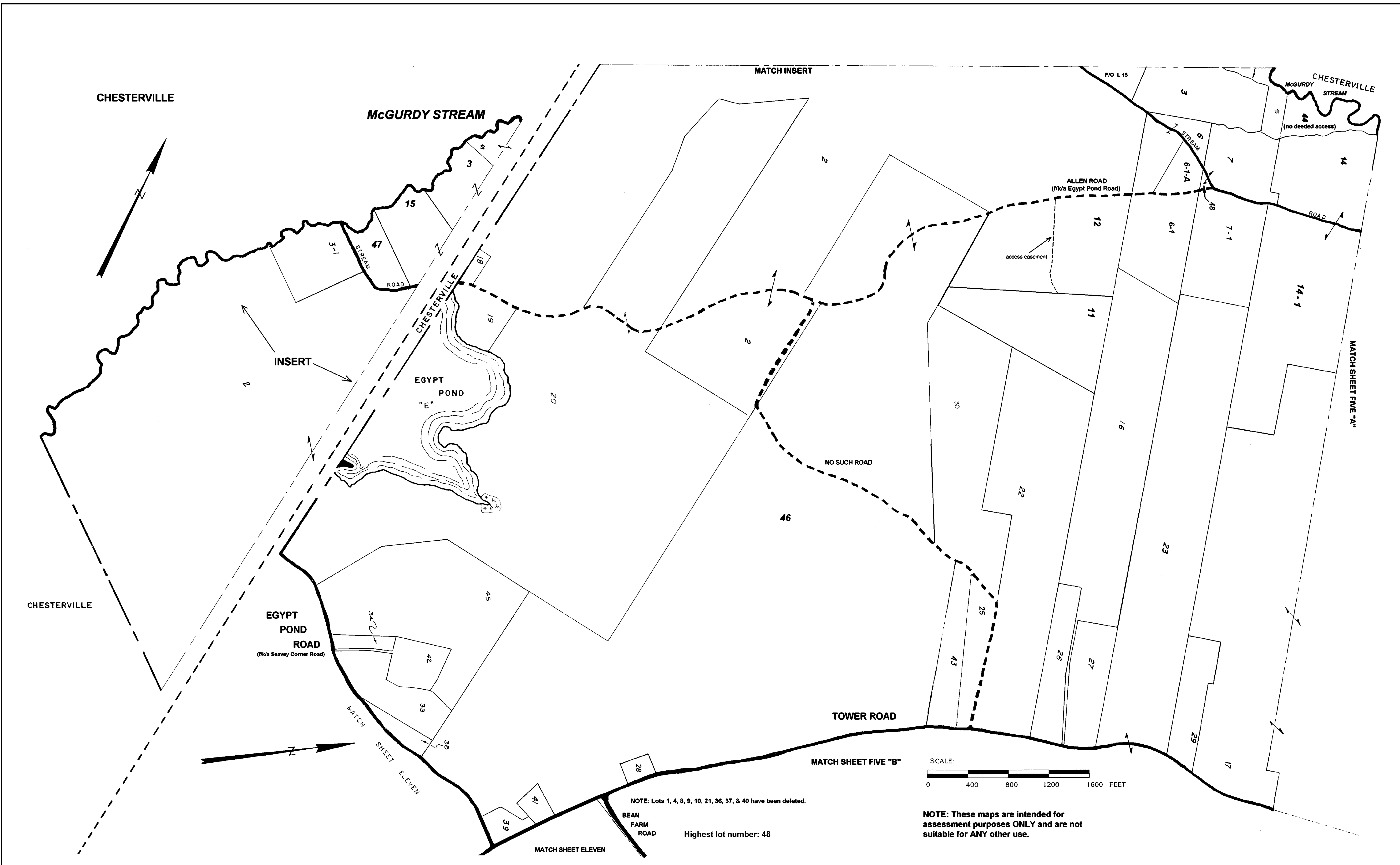
KENNEBEC HIGHLANDS

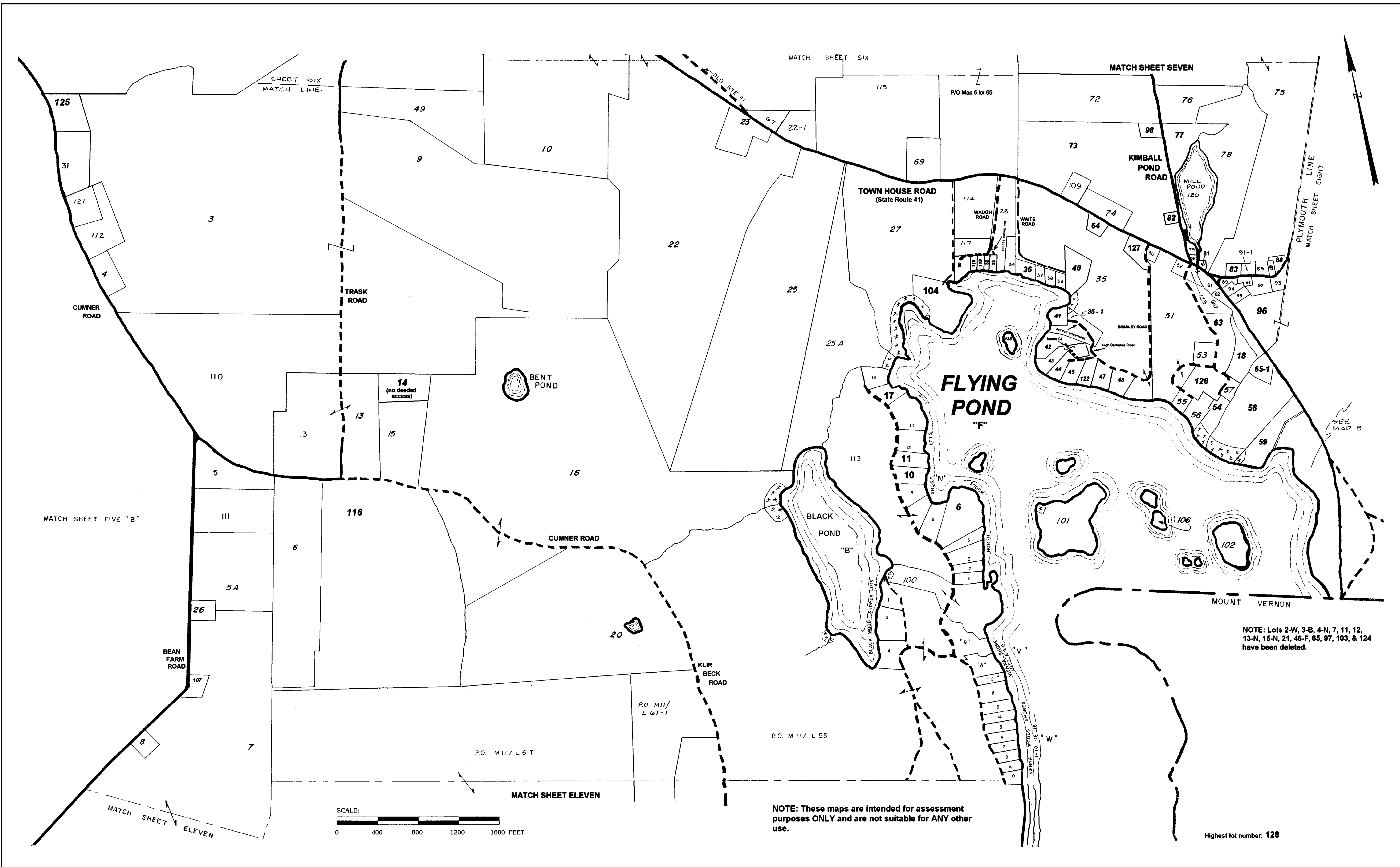
NOTE: These maps are intended for assessment purposes ONLY and are not suitable for ANY other use.



TOWN OF VIENNA TAX MAP NO. 8
 Original maps by J. Pongonis
 Updates 1994 - present by York Hill Surveying, Vienna, ME **APRIL 1, 2012**

ROME

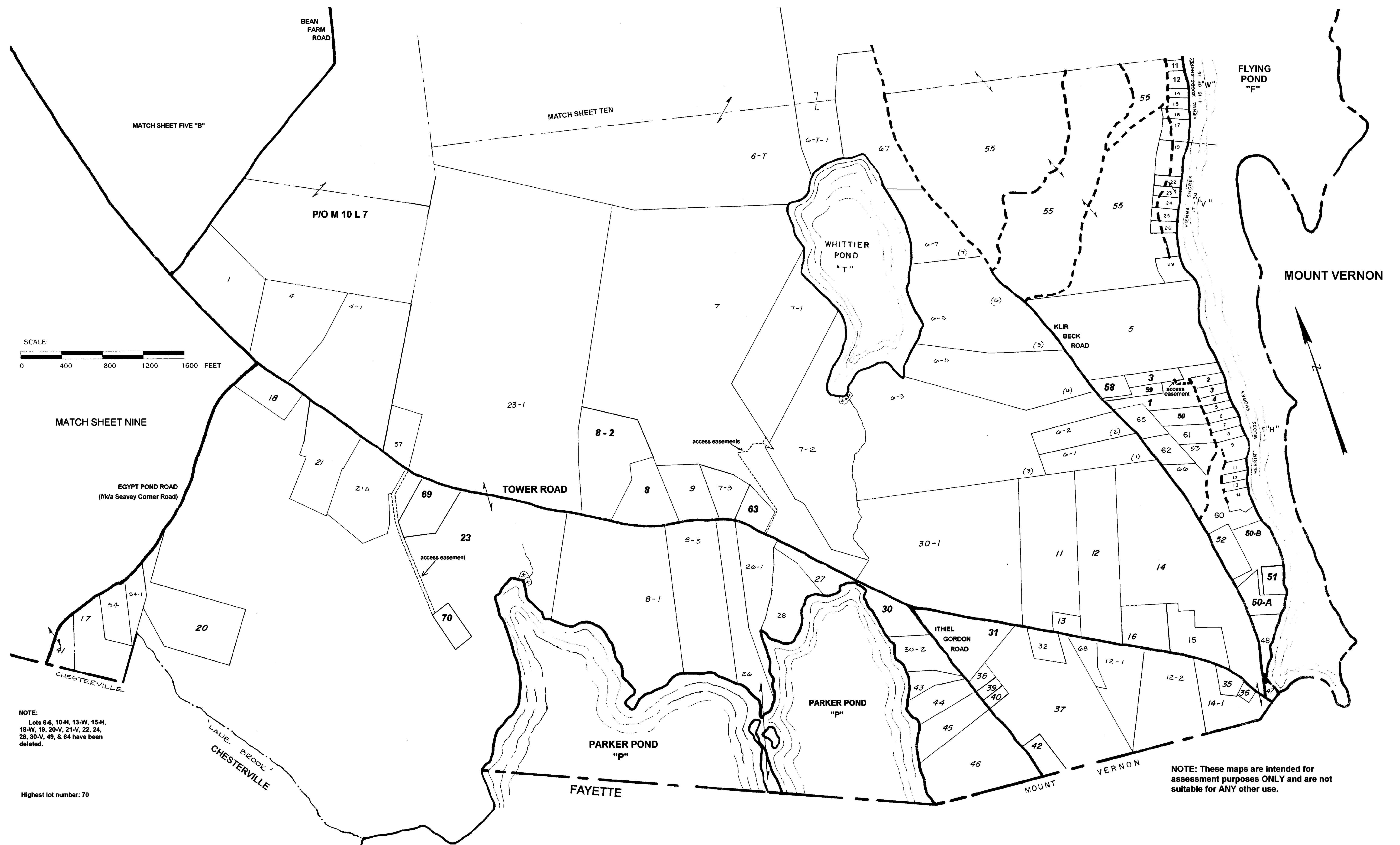




NOTE: Lots 2-W, 3-B, 4-N, 7, 11, 12, 13-N, 15-N, 21, 46-F, 65, 97, 103, & 124 have been deleted.

NOTE: These maps are intended for assessment purposes ONLY and are not suitable for ANY other use.

Highest lot number: 128



SCALE:
 0 400 800 1200 1600 FEET

NOTE:
 Lots 6-6, 10-H, 13-W, 15-H,
 18-W, 19, 20-V, 21-V, 22, 24,
 29, 30-V, 49, & 64 have been
 deleted.

Highest lot number: 70

NOTE: These maps are intended for
 assessment purposes ONLY and are not
 suitable for ANY other use.